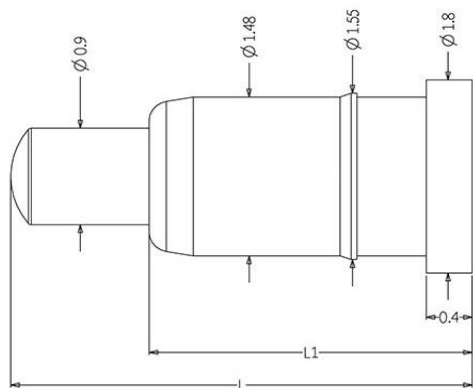


## pogo pin平底式 (SMT)



HY0912A45P [4]-[5]  
 标记\* 4\* 40gf 弹力  
 无标记默认下表的  
 第一个弹力  
 支持定制  
 标记\* 5\* 5A 电流  
 无标记默认下表的  
 第一个电流值(2A,3A,5A选择)  
 3A以上电流必须选择默认弹力

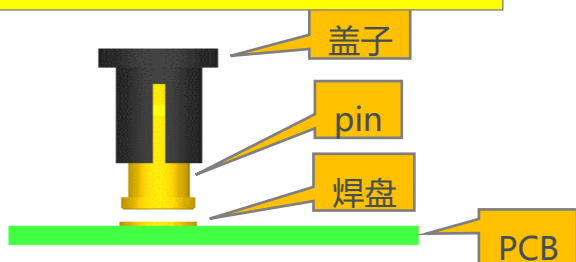
P/N	L	L1	Working stroke	Full stroke	Spring force Unit:gf	Voltage:DC12V Rated current	Durability
HY0903A14P	1.4	1.1	0.2	0.3	50gf	1.5A	20,000
HY0903A16P	1.6	1.3	0.2	0.3	50gf	1.5A	20,000
HY0905A18P	1.8	1.3	0.4	0.5	65gf	1.5A	20,000
HY0905A20P	2	1.5	0.4	0.5	65gf	1.5A	20,000
HY0907A22P	2.2	1.5	0.4	0.65	65gf	1.5A	20,000
HY0907A24P	2.4	1.7	0.6	0.7	80gf/40gf	1.5A	20,000
HY0909A26P	2.6	1.7	0.6	0.74	80gf/40gf	1.5A	20,000
HY0909A28P	2.8	1.9	0.6	0.74	80gf/40gf	1.5A	20,000
HY0909A31P	3.1	2.2	0.6~0.8	0.9	85gf/40gf	1.5A	20,000
HY0909A33P	3.3	2.4	0.6~0.8	0.9	85gf/40gf	1.5A	20,000
HY0912A34P	3.4	2.2	0.6~0.8	1.05	85gf/40gf	1.5A	20,000
HY0912A36P	3.6	2.4	0.6~0.8	1.05	85gf/40gf	1.5A	20,000
HY0909A37P	3.7	2.8	0.6~0.8	0.9	85gf/40gf	1.5A	20,000
HY0912A40P	4	2.8	0.6~0.8	1	85gf/40gf	1.5A	20,000
HY0917A45KP	4.5	2.8	0.8~1	1.26	85/40/20/120	1.5A	20,000
HY0912A45P	4.5	3.3	0.8~1	1.2	85/40/20/120	1.5A	20,000
HY0914A47P	4.7	3.3	0.8~1	1.26	85/40/20/120	1.5A	20,000
HY0917A50P	5	3.3	0.8~1	1.25	85/40/20/120	1.5A	20,000
HY0912A50P	5	3.8	0.8~1	1.2	85/40/20/120	1.5A	20,000
HY0917A55P	5.5	3.8	0.8~1	1.26	85/40/20/120	1.5A	20,000
HY0912A55P	5.5	4.3	0.8~1	1.2	70gf/40gf	2A/3A	20,000
HY0917A60P	6	4.3	0.8~1	1.6	70gf/40gf	2A/3A	20,000
HY0912A60P	6	4.8	0.8~1	1.2	70gf/40gf	2A/3A	20,000
HY0917A65P	6.5	4.8	0.8~1	1.6	70gf/40gf	2A/3A	20,000
HY0922A65P	6.5	4.3	0.8~1	1.6	70gf/40gf	2A/3A	20,000
HY0922A70P	7	4.8	0.8~1	1.6	70gf/40gf	2A/3A	20,000
HY0927A70P	7	4.3	0.8~1	1.6	70gf/40gf	2A/3A	20,000
HY0927A75P	7.5	4.8	0.8~1	1.6	70gf/40gf	2A/3A	20,000
HY0932A75P	7.5	4.3	0.8~1	1.6	70gf/40gf	2A/3A	20,000
HY0932A80P	8	4.8	0.8~1	1.6	70gf/40gf	2A/3A	20,000
HY0937A80P	8	4.3	0.8~1	1.6	70gf/40gf	2A/3A	20,000
HY0937A85P	8.5	4.8	0.8~1	1.6	70gf/40gf	2A/3A	20,000
HY0912A65P	6.5	5.3	0.8~1	1.2	70gf/45gf/20gf	2A/3A/5A	20,000
HY0917A70P	7	5.3	0.8~1	1.6	70gf/45gf/20gf	2A/3A/5A	20,000
HY0922A75P	7.5	5.3	0.8~1	1.6	70gf/45gf/20gf	2A/3A/5A	20,000

P/N	L	L1	Working stroke	Full stroke	Spring force Unit:gf	Voltage:DC12V Rated current	Durability
HY0912A75P	7.5	6.3	0.8~1	1.2	70gf/45gf/20gf	2A/3A/5A	20,000
HY0927A80P	8	5.3	0.8~1	1.6	70gf/45gf/20gf	2A/3A/5A	20,000
HY0917A80P	8	6.3	0.8~1	1.6	70gf/45gf/20gf	2A/3A/5A	20,000
HY0922A85P	8.5	6.3	0.8~1	1.6	70gf/45gf/20gf	2A/3A/5A	20,000
HY0912A85P	8.5	7.3	0.8~1	1.2	70gf/45gf/20gf	2A/3A/5A	20,000
HY0932A85P	8.5	5.3	0.8~1	1.6	70gf/45gf/20gf	2A/3A/5A	20,000
HY0927A90P	9	6.3	0.8~1	1.6	70gf/45gf/20gf	2A/3A/5A	20,000
HY0917A90P	9	7.3	0.8~1	1.6	70gf/45gf/20gf	2A/3A/5A	20,000
HY0937A90P	9	5.3	0.8~1	1.6	70gf/45gf/20gf	2A/3A/5A	20,000
HY0922A95P	9.5	7.3	0.8~1	1.6	70gf/45gf/20gf	2A/3A/5A	20,000
HY0912A95P	9.5	8.3	0.8~1	1.2	70gf/45gf/20gf	2A/3A/5A	20,000
HY0932A95P	9.5	6.3	0.8~1	1.6	70gf/45gf/20gf	2A/3A/5A	20,000
HY0927A100P	10	7.3	0.8~1	1.6	70gf/45gf/20gf	2A/3A/5A	20,000
HY0917A100P	10	8.3	0.8~1	1.6	70gf/45gf/20gf	2A/3A/5A	20,000
HY0937A100P	10	6.3	0.8~1	1.6	70gf/45gf/20gf	2A/3A/5A	20,000
HY0922A105P	10.5	8.3	0.8~1	1.6	70gf/45gf/20gf	2A/3A/5A	20,000
HY0932A105P	10.5	7.3	0.8~1	1.6	70gf/45gf/20gf	2A/3A/5A	20,000
HY0927A110P	11	8.3	0.8~1	1.6	70gf/45gf/20gf	2A/3A/5A	20,000
HY0937A110P	11	7.3	0.8~1	1.6	70gf/45gf/20gf	2A/3A/5A	20,000
HY0932A115P	11.5	8.3	0.8~1	1.6	70gf/45gf/20gf	2A/3A/5A	20,000
HY0912A115P	11.5	10.3	0.8~1	1.2	70gf/45gf/20gf	2A/3A/5A	20,000
HY0917A120P	12	10.3	0.8~1	1.6	70gf/45gf/20gf	2A/3A/5A	20,000
HY0937A120P	12	8.3	0.8~1	1.6	70gf/45gf/20gf	2A/3A/5A	20,000
HY0927A130P	13	10.3	0.8~1	1.6	70gf/45gf/20gf	2A/3A/5A	20,000
HY0937A140P	14	10.3	0.8~1	1.6	70gf/45gf/20gf	2A/3A/5A	20,000
HY0917A140P	14	12.3	0.8~1	1.6	70gf/45gf/20gf	2A/3A/5A	20,000
HY0927A150P	15	12.3	0.8~1	1.6	70gf/45gf/20gf	2A/3A/5A	20,000

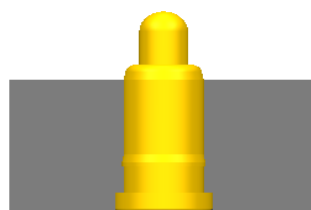
## pogo pin平底式 (SMT) 使用与设计安装

### 贴片安装

SMT贴片需加盖子+编带包装



### 孔安装



### 工作行程

